

# Waste Water Treatment Product Guide



# Waste Water Treatment Product Guide

**X-CALLIBUR**  
CONSTRUCTION CHEMISTRY

# The X-Calibur Waste Water Treatment Repair and Protection System

## STEEL & PIPE PROTECTION

### Internal

- **X-Shield EpoxySeal CR**  
High performance epoxy coating for concrete & steel

### External

- **X-Shield EpoxyLock HS**  
Solids low VOC anti-corrosion
- **X-Shield PolyLock UV**  
UV resistant polyurethane topcoat

## GROUTING & ANCHORING

- **X-Tite Performance Grout**  
High performance shrinkage compensated grout
- **X-Tite Resiloc EX22**  
High performance epoxy resin anchor

## WATERPROOFING

- **X-Pruf KeyLock**  
Mechanically bonded membrane
- **X-Pruf XL Membrane**  
Self adhesive bitumen membrane
- **X-Pruf ProtectBoard**  
Protection board
- **X-Mix IWA**  
Concrete integral waterproofing admixture

## LEAK SEALING

- **X-Roc WaterPlug**  
Ultra fast cementitious water stopping mortar
- **X-Seal 3C AF**  
Cold caulking cord
- **X-Tite InjectionGrout PU100**  
Hydrophobic polyurethane grout

## CONCRETE PROTECTION

- **X-Shield EpoxySeal CR**  
High performance epoxy coating for concrete & steel
- **X-Shield AntiCarb S**  
Anti-carbonation
- **X-Shield FlexCoat**  
High performance flexible cement coating for concrete
- **X-Shield FlexPruf**  
High performance polymer modified elasto-cement waterproof coating

## CONCRETE REPAIR

- **X-Roc EpoxyBond**  
Epoxy primer and reinforcing steel protection
- **X-Roc CA**  
Corrosion resistant
- **X-Roc UtilityPatch**  
Rapid setting shrinkage compensated calcium
- **X-Roc MicroCrete**  
High strength fluid micro concrete
- **X-Roc StrongPatch**  
High strength low shrinkage repair and overlay mortar

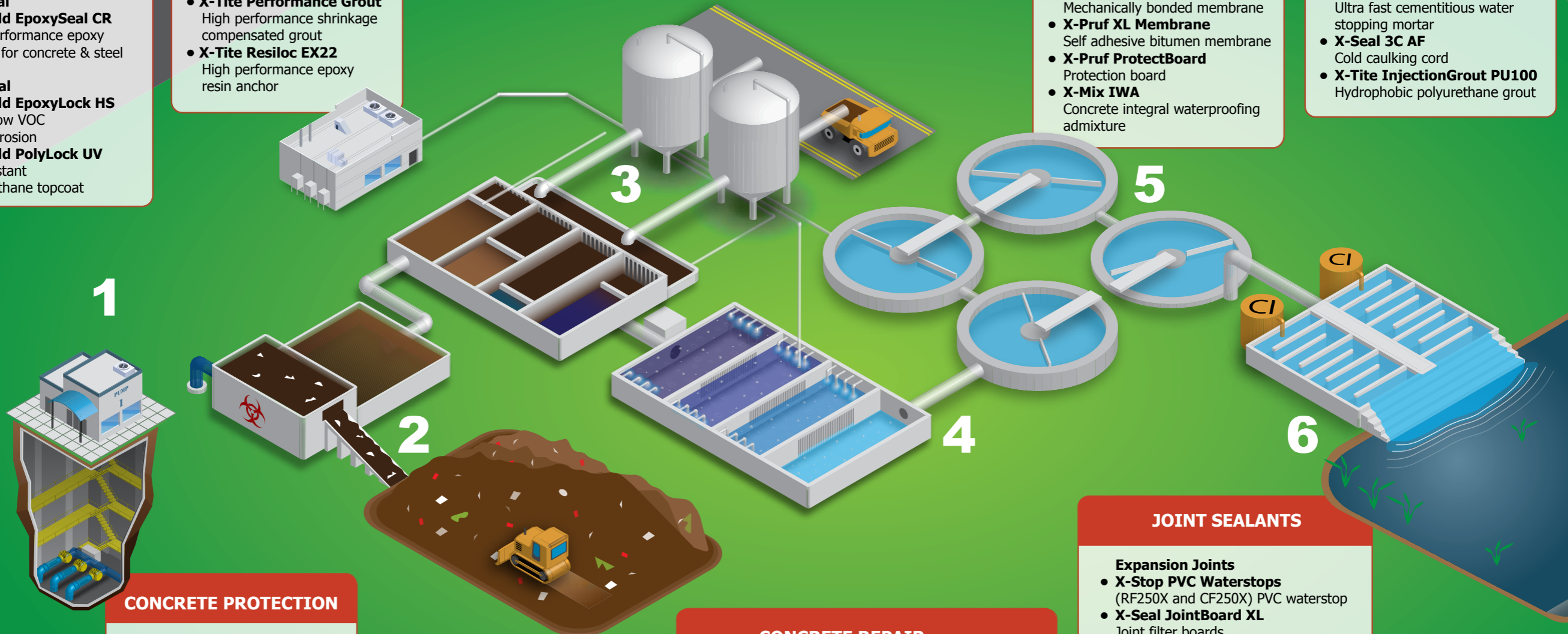
## JOINT SEALANTS

### Expansion Joints

- **X-Stop PVC Waterstops**  
(RF250X and CF250X) PVC waterstop
- **X-Seal JointBoard XL**  
Joint filter boards
- **X-Seal CR800**  
High performance chemical resistant joint sealant
- **X-Seal JointBand**  
Joint filter boards

### Construction Joints

- **X-Stop PVC Waterstops**  
(RF 250C and CF250C) PVC waterstop
- **X-Stop HWS Waterstop**  
Hydrophilic waterstop



1

Influent is received and conveyed to the inlet chamber through pump/ lifting stations or by tanker delivery

2

The inlet chamber receives the influent where floating and large debris are screened off; sand and aggregate are then removed as it passes through the de-gritting chamber

3

Further primary treatment of the effluent entails primary clarification, sludge digestion by the action of anaerobic microorganisms and the venting off of biogas, the effluent passes through to the secondary treatment phase of the process

4

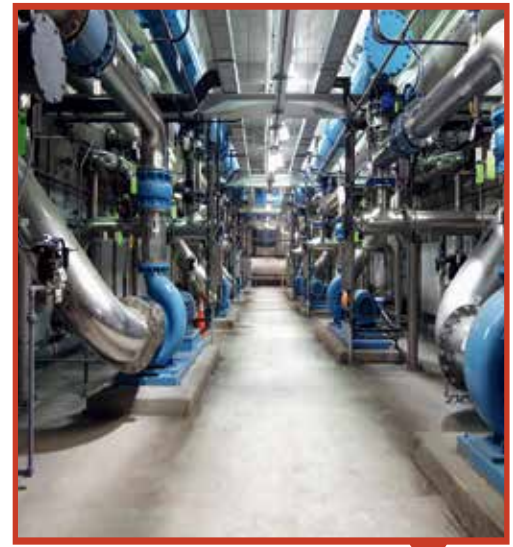
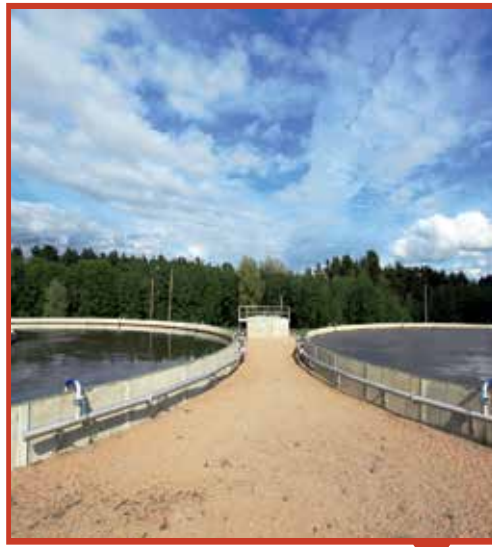
The primary effluent passes through to the secondary treatment stage where aeration and further sludge treatments take place

5

The secondary clarifiers are settling tanks where much of the remaining solid particulates or suspended solids are removed to the bottom as sludge

6

The secondary effluent enters the final treatment stage as the wastewater is disinfected through exposure to chlorine, prior to being de-chlorinated using Sulphur Dioxide before being released" or similar.



## Estimation Guide

Product Name	VOC g/L	Pack Size	Dosage Yield/Coverage
<b>WaterProofing</b>			
X-Pruf XL Membrane	0	1m x 10m	10m <sup>2</sup> /roll
X-Mix IWA	0	210L	6L/m <sup>3</sup>
X-Pruf ProtectBoard	0	2m x 1m boards	2m <sup>2</sup> boards
X-Pruf KeyLock	0	1.4 x 20m rolls	28m <sup>2</sup> rolls
<b>Grouting &amp; Anchoring</b>			
X-Tite Performance Grout	10	25kg	13.5L/25 kg
X-Tite ResiLoc EX22	50	400ml	Varies on hole size
<b>Steel &amp; Pipe Protection</b>			
X-Shield EpoxyLock HS	0	5 & 15L	4.5 to 8.7m <sup>2</sup> coat
X-Shield PolyLock UV	390	19L	4.6 to 6.6m <sup>2</sup> /L coat
<b>Concrete Protection</b>			
X-Shield AntiCarb S	10	19L	5.7 m <sup>2</sup> /L per coat
X-Shield FlexCoat	0	22kg	12.8m <sup>2</sup> /per coat/per pack @ 1mm
X-Shield EpoxySeal CR	0	4 & 15L	6.6 m <sup>2</sup> /L per coat
X-Shield FlexPruf	3	22kg	12.8L (3.4 gallons)
<b>Leak Sealing</b>			
X-Roc WaterPlug	10	5 & 25kg	12L/25kg
X-Seal 3C AF	0	3kg	Varies with joint size
X-Tite InjectionGrout PU100	0	1kg	Varies with crack size
<b>Concrete Repair</b>			
X-Roc EpoxyBond	0	1 & 5L	5m <sup>2</sup> /L
X-Roc CA	0	25kg	13L/25kg
X-Roc UtilityPatch	0	25kg	13L/25kg
X-Roc MicroCrete	10	25kg	12.5L/25kg
X-Roc StrongPatch	10	25kg	12L/25kg
<b>Joint Sealants</b>			
X-Stop PVC Waterstops	0	12m rolls	12m/roll
X-Seal JointBoard XL	0	1m x 2m boards	2m <sup>2</sup> boards
X-Seal JointBand	0	20m rolls	20m/roll
X-Seal CR800	0	2.5 & 4L	Varies on joint size
X-Stop HWS Waterstops	0	10m rolls	10m/roll